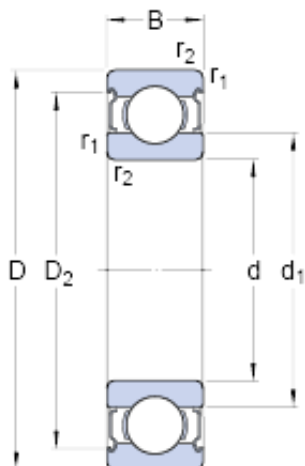




BEARING ITALIA S.P.A



65 mm x 85 mm x 10 mm skf W 61813-2Z Deep groove ball bearings

Bearing No. W 61813-2Z

W 61813-2Z Bearing 2D drawings and 3D CAD models

Size	85x65x10 mm
Bore Diameter	85 mm
Outer Diameter	65 mm
Width	10 mm
d	65 mm
D	85 mm
B	10 mm
d ₁	71.4 mm
D ₂	80.62 mm
r _{1,2} - min.	0.6 mm
D _a - max.	mm
r _a - max.	0.6 mm
Basic dynamic load rating - C	10.4 kN
Basic static load rating - C ₀	12 kN
Fatigue load limit - P _u	0.51 kN
Reference speed	16000 r/min
Limiting speed	8000 r/min
Calculation factor - k _r	0.02
d ₁	71.4 mm
D ₂	80.62 mm
r _{1,2} min.	0.6 mm
D _a max.	0 mm
r _a max.	0.6 mm
Basic dynamic load rating C	10.4 kN



BEARING ITALIA S.P.A

Basic static load rating C_0	12 kN
Fatigue load limit P_u	0.51 kN
Calculation factor k_r	0.02
Calculation factor f_0	17